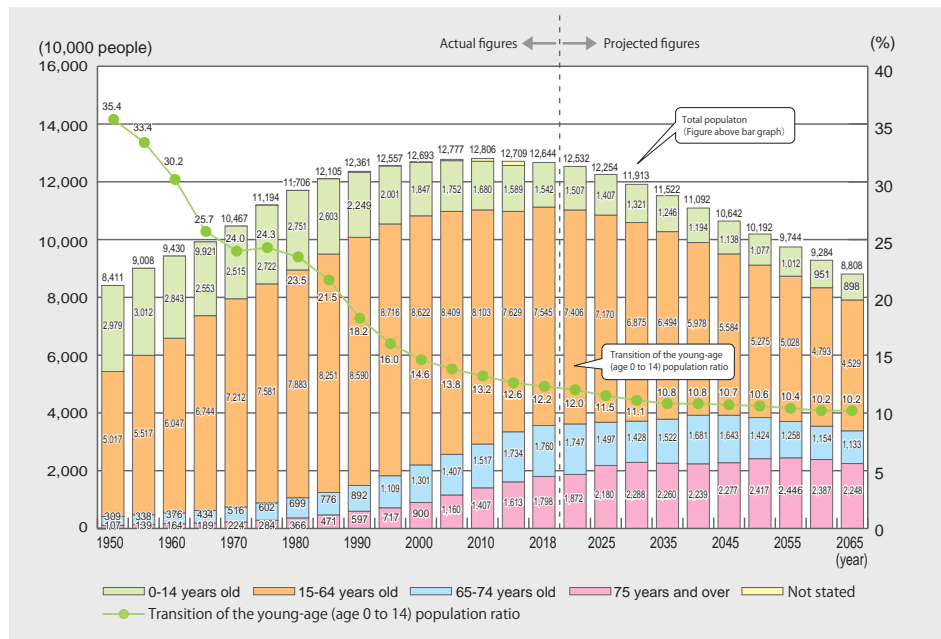


# I Facts and Figures

## 1. Population, Family and Household

### Population Structure

The total population in Japan as of October 1, 2018, was 126,443,000 which was a decrease of 263,000 (0.21%) from the previous year. In 2060, about 40% of the population will be over 65 and 25% of the population will be over 75 if the total fertility rate (TFR) remains around 1.43.



Source: The results are based on MIC's Population Census up to 2015; as for 2018, MIC's "Population Estimates" (Current Population Estimates as of October 1, 2018); and as for 2020 onward, National Institute of Population and Social Security Research, "Population Projections for Japan (the 2017 estimate) for the medium-fertility and medium-mortality projections."

Note:

- 136 non-Japanese 70 years of age or over in Okinawa Prefecture in 1950 and 23,328 people 70 years of age or over in Okinawa Prefecture in 1955 are excluded from the age-group results.
- Calculations for age 0-14 percentages from 1950 to 2015 exclude cases of age unknown from the denominator.

### Children and the Elderly in the Total Population

	Total Population (1,000 person)	Proportion of children (0 – 14 years)	Proportion of 65 years of age and over	Proportion of 75 years of age and over
Total	126,443	12.2%	28.1%	14.2%
Women	64,911	11.6%	31.0%	16.8%
Men	61,532	12.8%	25.1%	11.5%

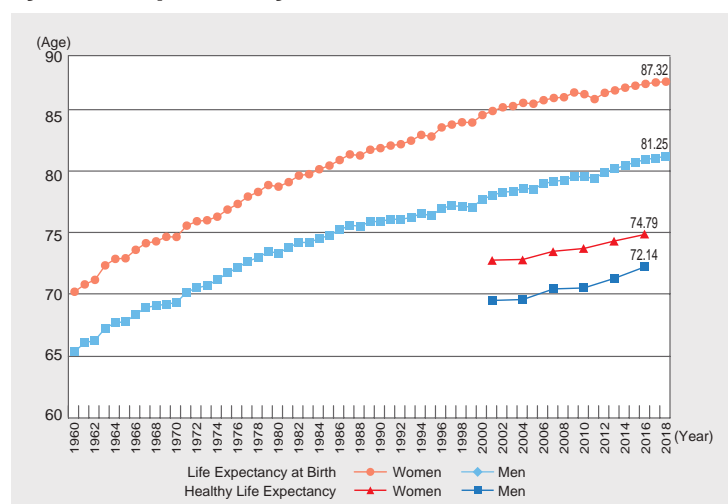
Source: "Population Estimates," MIC

Note: Data as of October 1, 2018

### Life Expectancy at Birth and Healthy Life Expectancy

Life expectancy at birth had lengthened almost every year. In 2018, it was 87.32 years for women and 81.25 for men.

Healthy life expectancy was 74.79 years for women and 72.14 for men in 2016.

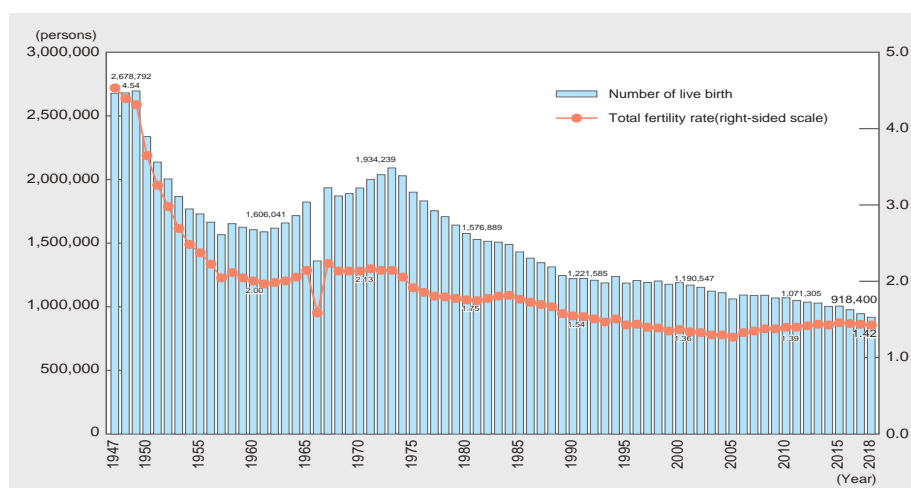


Source: Life expectancy at birth; "Abridged Life Tables for Japan," MHLW, Healthy life expectancy; data from documents of MHLW.

## Live Births and Total Fertility Rate

The number of live births was 918,400 in 2018, a decrease of 27,746 from the previous year. The total fertility rate in 2018 was 1.42, a decrease of 0.01 percent from the previous year.

Source: "Vital Statistics," MHLW  
Reference:  
• First baby boom: 1947-1949  
• Second baby boom: 1971-1974

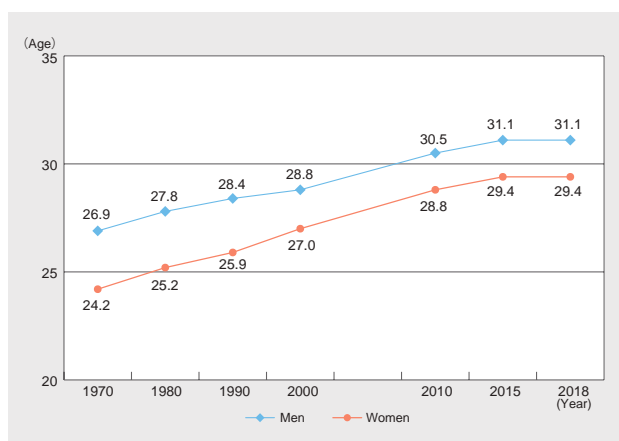


## Marriage and Divorce

The mean age of the first marriage for both men and women has gone up. The marriage rate (per 1,000 population) in 2018 was 4.7, the lowest-ever rate. It was nearly half of the rate in the early 1970s of the "marriage boom" era. The divorce rate (per 1,000 population) in 2018 was 1.68 and has been in a decreasing trend since 2008.

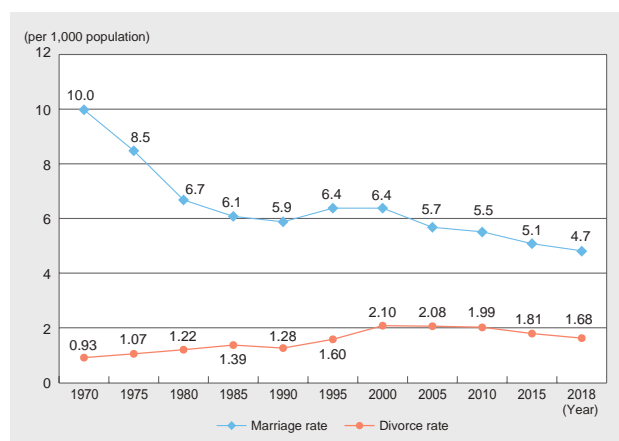
### Mean Age of First Marriage

Source: "Vital Statistics," MHLW.



### Marriage and Divorce Rate

Source: "Vital Statistics," MHLW.



## Households by Family Type

The number of private households\* has increased since 1990, and the average number of household members continues to decline. This is not only because of an increase of nuclear families and decline in the number of children, but also an increase in the number of one-person households by the young and the elderly. In 2015 one-person households accounted for more than one third of households.

Source: "Population Census," MIC.

Note: "After 2000, new item of family type of household in 2010 was used."

