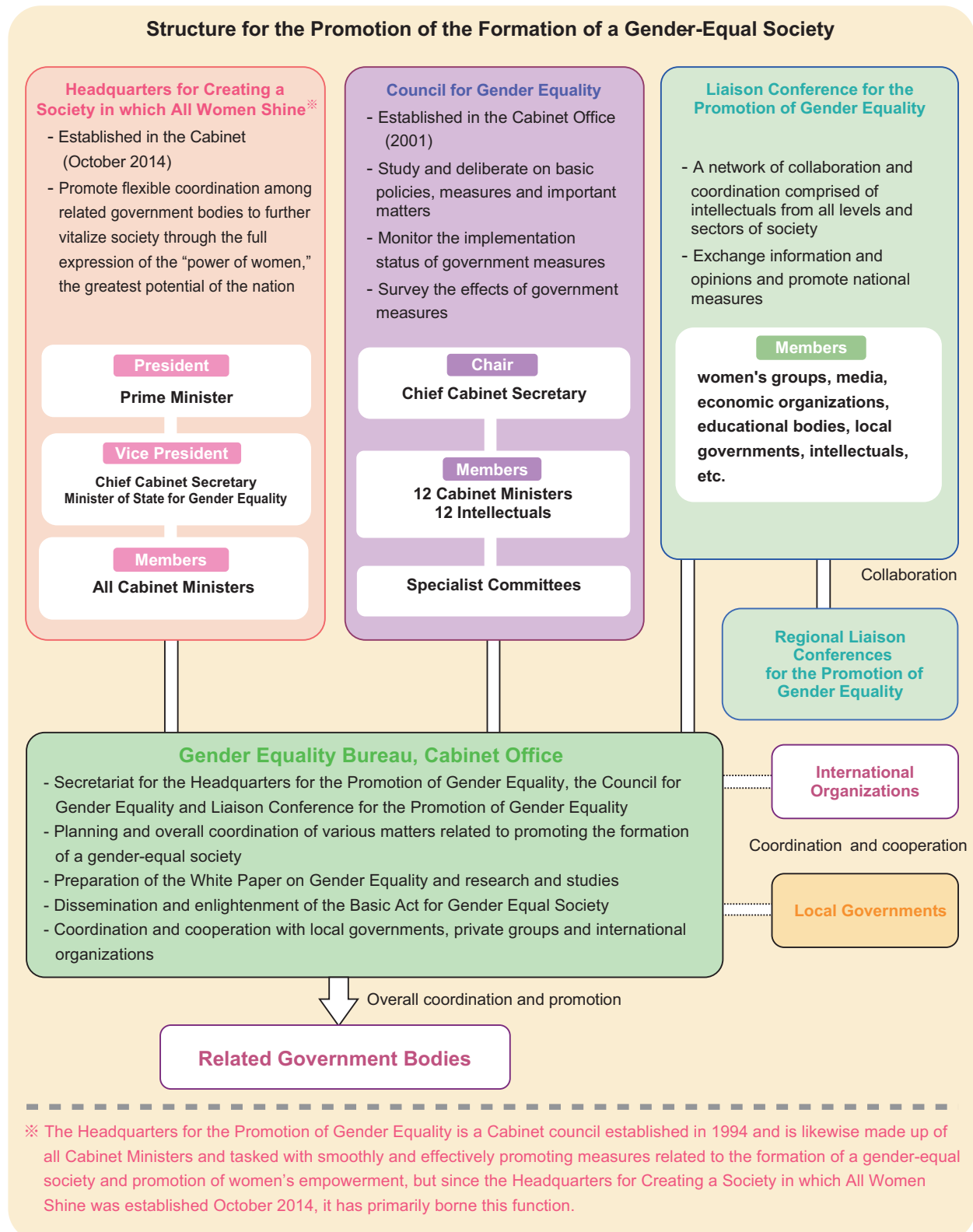


## II Measures for Gender Equality

### 1. Framework for Promotion of Gender Equality

#### ■ National Machinery for the Promotion of the Formation of a Gender-Equal Society

As part of the reform of the Central Government implemented in January 2001, the Council for Gender Equality and the Gender Equality Bureau were established. Additionally, the Headquarters for Creating a Society in which All Women Shine was created in October 2014 to promote the full expression of the “power of women,” the greatest potential that the nation has, and thereby enhance the vitality of Japanese society.



## Council for Gender Equality and Specialist Committees

### Council for Gender Equality

**Chair** Chief Cabinet Secretary

**Members** 12 Cabinet ministers , 12 intellectuals (designated by the Prime Minister)

#### [Reports]

- Priorities for Gender Equality and Promotion of Women's Active Participation (May 2017)



The 47<sup>th</sup> Council for Gender Equality

### Specialist Committee on the Intensive Policy

#### [Purpose]

- To study and deliberate upon the contents of the Intensive Policy to Accelerate the Empowerment of Women (hereinafter referred to as "the Intensive Policy"), monitoring the state of implementation of measures included in the Fourth Basic Plan for Gender Equality and the implementation status of reflection the budgetary requests of each ministry, based on the Intensive Policy.
- To study the impact of government measures on the Formation of Gender Equal Society.

### Specialist Committee on Violence against Women

#### [Purpose]

To conduct research and examination on what kind of measures to take to prevent violence and support victims, while keeping in mind the various fields of spousal violence, sexual crimes, prostitution, trafficking in persons, sexual harassment, and stalker actions.

#### [Reports]

- Tasks and Measures to Eliminate "Violence against Women"
  - Promoting measures against sexual offences-(July 2012)
- Tasks and Measures to Eliminate "Violence against Women"
  - Follow up of the Implementation Status of Measures for the Prevention of Spousal Violence, etc. (April, 2014)
- Current situation and problems of sexual violence against the youth
  - The issue of so-called "JK Business" and forced appearance in pornographic materials-(March,2017)

## Structure of the Gender Equality Bureau, Cabinet Office

