

7. Health

Life Expectancy at Birth

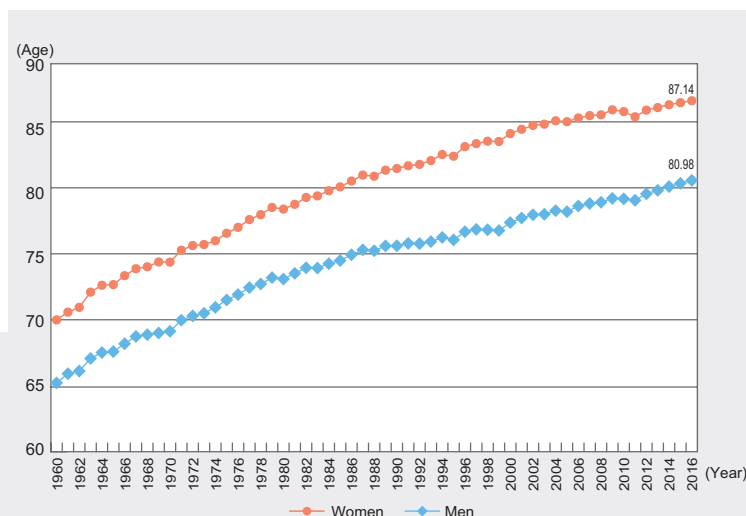
Life expectancy at birth for men and women had lengthened almost every year and reached over 70 in 1960 for women and in 1971 for men, respectively. In 2016, life expectancy at birth was 87.14 years for women and 80.98 for men.

Source:

"Abridged Life Tables for Japan 2016," the Ministry of Health, Labour and Welfare

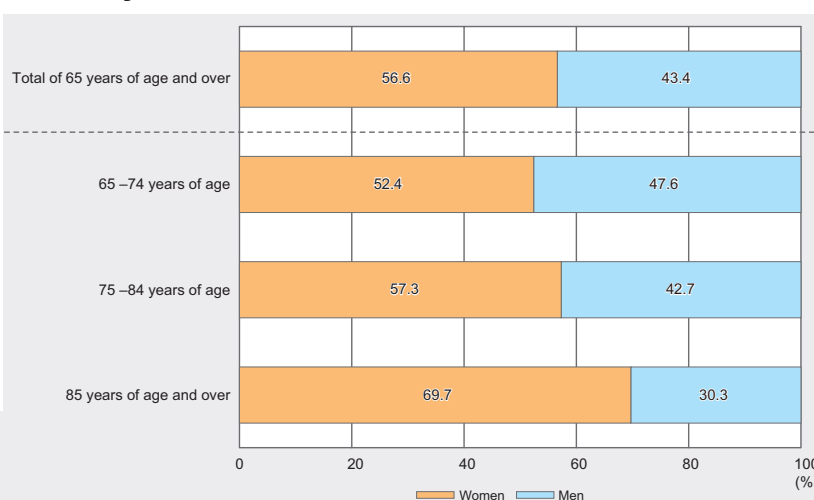
Note:

1. Data of 1960, 1965, 1970, 1975, 1980, 1985, 1990, 1995, 2000, 2005, 2010 and 2015 are based on the complete life tables. Data of other years are based on the abridged life tables.
2. Data of 1971 and before do not cover Okinawa Prefecture.



Proportion of Elderly Population by Sex

As life expectancy for women is generally longer than that for men, the share of women is larger than that of men among the elderly population. Hence as population ages, the share of women in the population becomes larger.

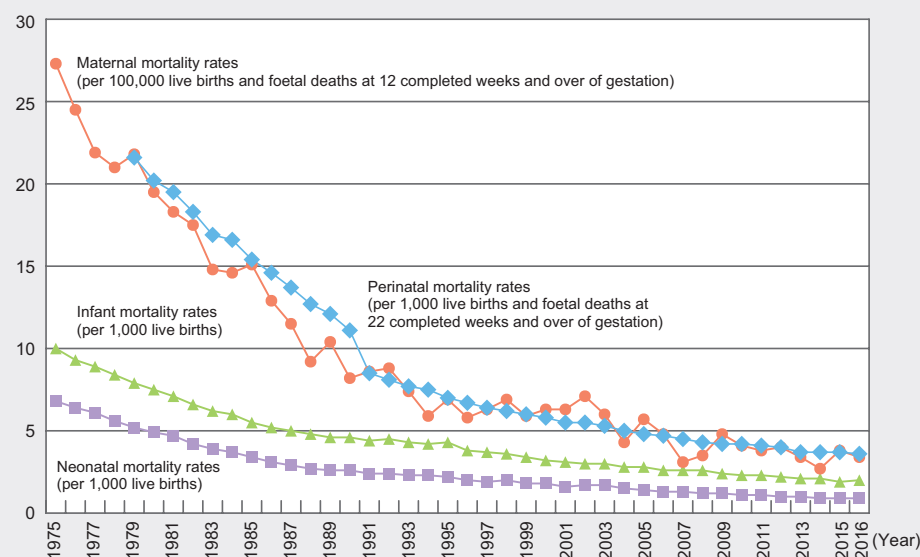


Source:

"Population Estimates," the Ministry of Internal Affairs and Communications

Maternal / Perinatal / Neonatal / Infant Mortality

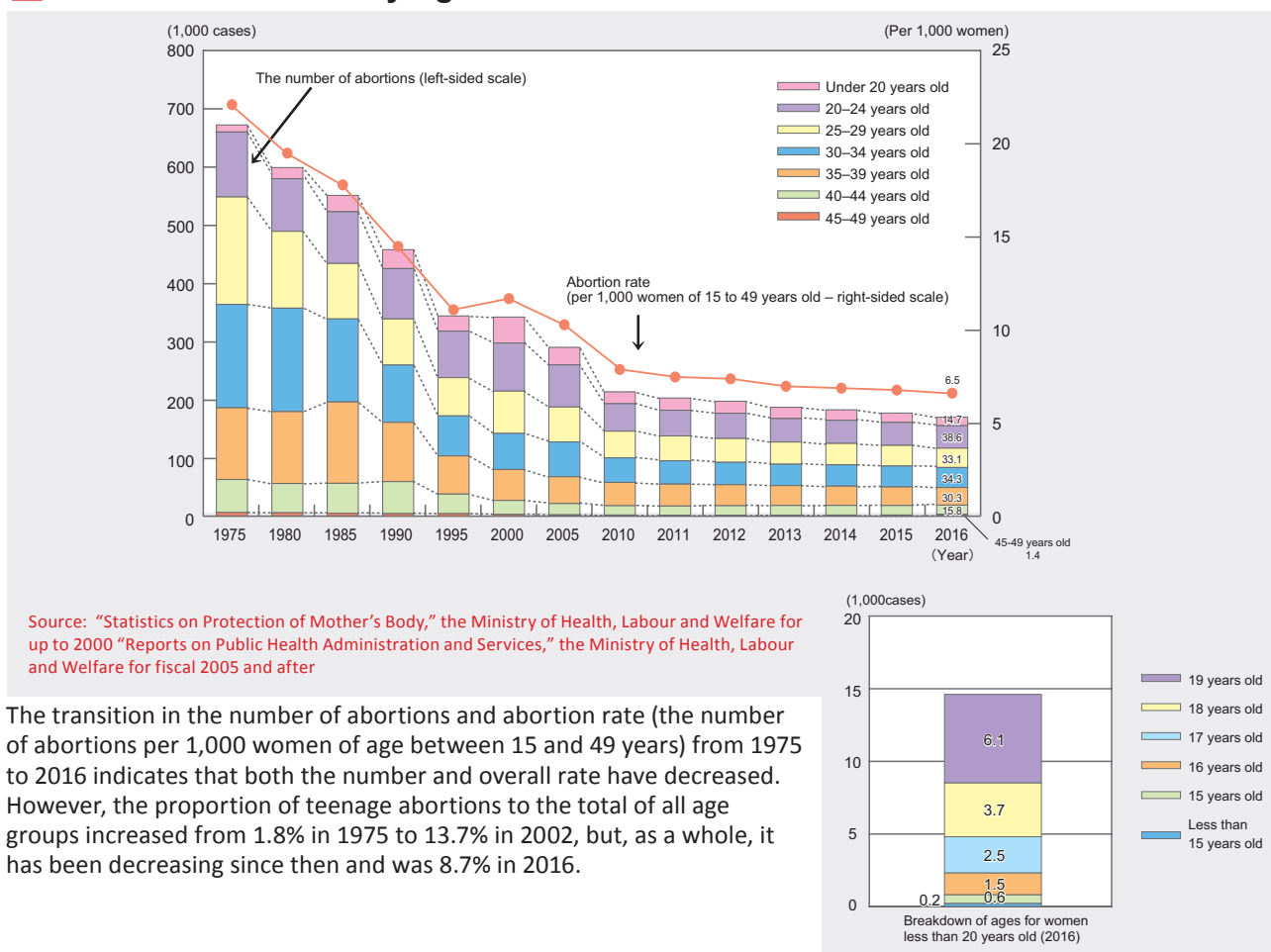
The transition of main indices for items related to maternal and child health from 1975 to 2016 reveals that, as a whole, every index has been on the decline.



Source:

"Vital Statistics," the Ministry of Health, Labour and Welfare

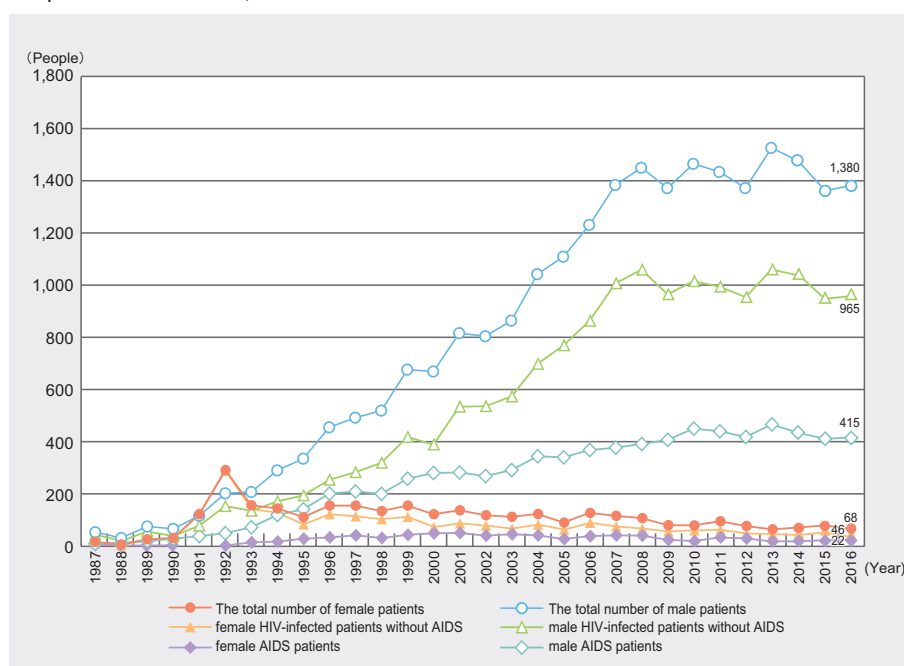
Number of Abortion by Age Bracket



Number of HIV-Infected Patients

The number of HIV-infected patients including AIDS patients newly reported in 2016 was 1,448 (1,380 for men and 68 for women, 1,434 in the previous year,) and the accumulated total (excluding cases caused by blood products) reached over 27,000.

The number of HIV-infected patients without AIDS newly reported in 2016 was 965 for men and 46 for women and as for patients with AIDS, 415 for men and 22 for women.



The largest share of newly reported cases of HIV-infected patients without AIDS involved young people in their 20s (306 for men and 7 for women) and 30s (298 for men and 19 for women.) As for patients with AIDS, age distribution is shifted 10-year older than HIV-infected patients without AIDS.

Source: Data from the Ministry of Health, Labour and Welfare
Note: The number of new HIV-infected patients reported for year